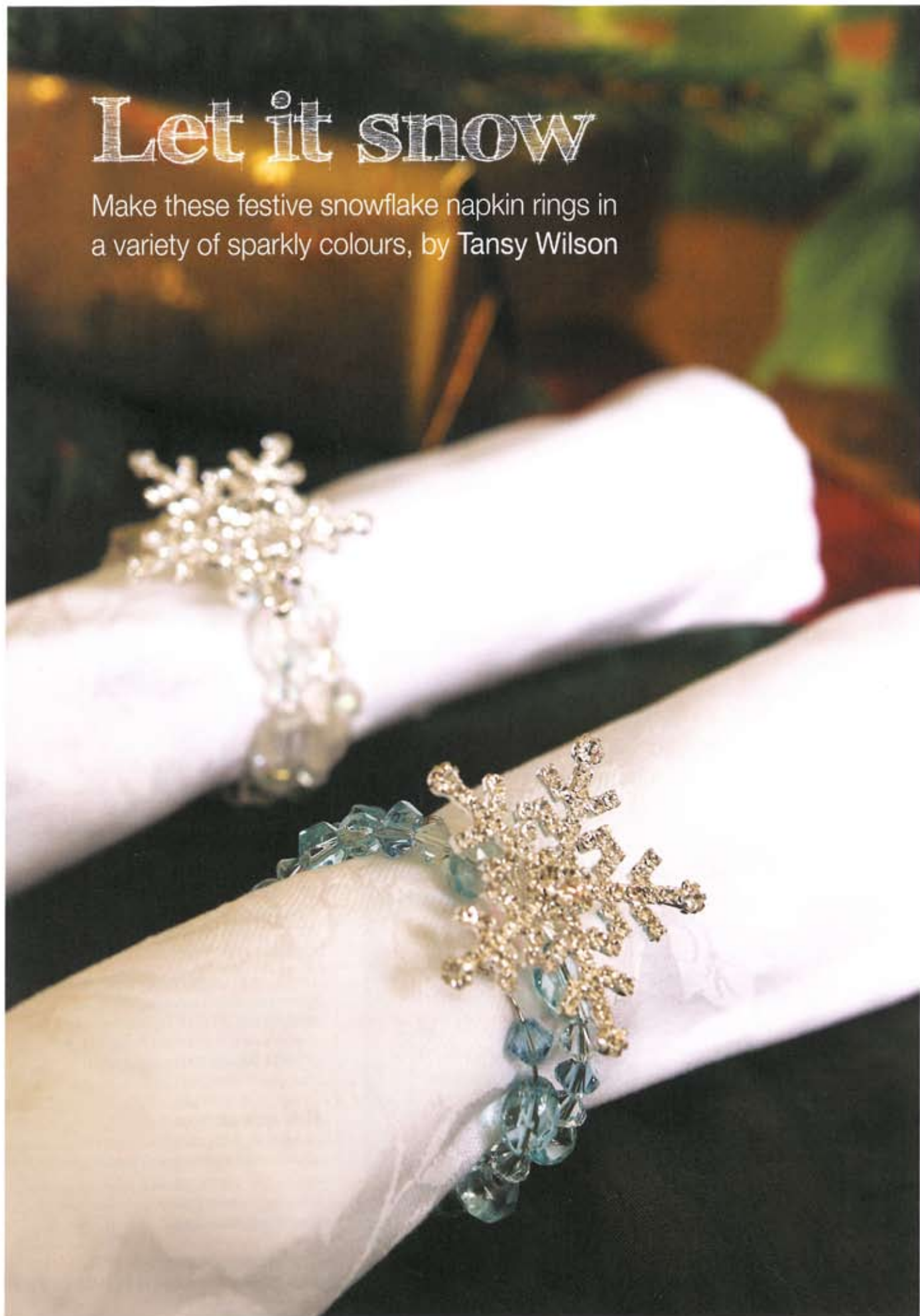


# Let it snow

Make these festive snowflake napkin rings in a variety of sparkly colours, by Tansy Wilson



I discovered these fabulous diamanté embellishments from the 'Hand Crafted Card Company Ltd' and immediately thought of incorporating them onto festive napkin rings. These would be great in your home or as gifts. Make them in a range of colours by simply using different coloured beads.

**You will need:**

Snowflake diamanté embellishments  
(Product code: DES - 61)  
Memory wire  
A range of sparkly beads



## Making notes

### Tips

Memory wire is great as you can stretch it to put the napkins in, but it will go back to its original size every time.

Make sure the holes in your beads are not too small (or equally the beads are not too big) so that they can be easily threaded onto the wire coils.

These would equally make pretty glass charms by simply repeating the exact steps except only cutting one loop of memory wire. Remember they must be different colours so you know which is your glass!

### Resources

Snowflake diamanté embellishments:  
[www.thehandcraftedcardcompany.co.uk](http://www.thehandcraftedcardcompany.co.uk)  
40 loops of 40mm diameter memory wire:  
eBay member: abzuk2006  
[abz2006uk@aol.com](mailto:abz2006uk@aol.com)

### Designer details

[tansywilson@hotmail.com](mailto:tansywilson@hotmail.com)

1. Using wire cutters suitable for memory wire, cut a length containing three loops from the coil. You can cut more coils depending on how many beads you want to add but remember to allow a bit extra for making small loops at the ends of the wire.
2. Cut a 10cm length of 0.3mm wire and loop it through one of the arms on the snowflake near to the centre of the embellishment. Thread the two ends of wire through the hole of one of your larger beads and then thread through the opposite arm on the snowflake. Pull tightly, securing the snowflake onto the top of your bead. Twist the wire together and poke the ends back through the hole of the bead to keep it tidy.
3. Make a tiny loop at one end of the memory wire with round nose pliers. You can now start to add your sparkly beads to the coils and they won't fall off the end. This is where you can either match your tableware or have each one different for your guests. I have threaded on 18 beads, then my bead holding the snowflake, and then another 18 beads.
4. When you have added all of your beads make another tiny loop, this time at the other end, securing all the beads in place.