

# 'Heirloom' Table Decoration

## Recipe

Facebook 25.4.13

### You will need:

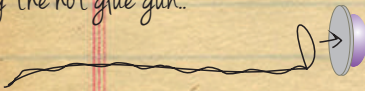
- VICTORIAN GLASS TEA LIGHT HOLDER: CODE EM429-4
- LACE (WE CHOSE OUR 73MM WIDE IVORY VINTAGE STYLE LACE): CODE LF-3 (30CM SHOULD BE PLENTY)
- DIAMANTE EMBELLISHMENTS: OH THE CHOICE!! JUST LOOK ON OUR WEBSITE!
- DIAMANTE AND PEARL EMBELLISHMENTS: SEE ABOVE!
- FABRIC EMBELLISHMENTS: WE USED OUR GOLD BEADED RIBBON FLOWERS: CODE EM122-3
- WIRE: 22 GAUGE IS ABOUT RIGHT
- GLUE: HOT GLUE GUN (WE HAVE A VARIETY TO CHOOSE FROM)
- BUTTONS
- FLORISTS 'DRY' FOAM
- TOOLS: WIRE CUTTERS & POINTED PLIERS (TWEEZERS MIGHT BE USEFUL)



Victorian tea light holder with lovely silver decoration

1. Line the tea-light holder with the lace and, having roughly cut it to shape, press in the florists foam (the firmer fit the better so you might want to wrap the lace round the foam and push them in together)

2. Start to make your 'stems' cut wire lengths to about 25cm and bend in half, push through embellishments with 'gaps' in the design before tightly twisting the wires. For 'solid' embellishments bend wire in half and twist so there is a tiny 'loop' at the top and bend it at a right angle. Glue this to the back of the embellishment using the hot glue gun...



3. If using buttons you can loop through the bottom one and then glue additional buttons on top. If using fabric flowers, attach to the loops as shown above.

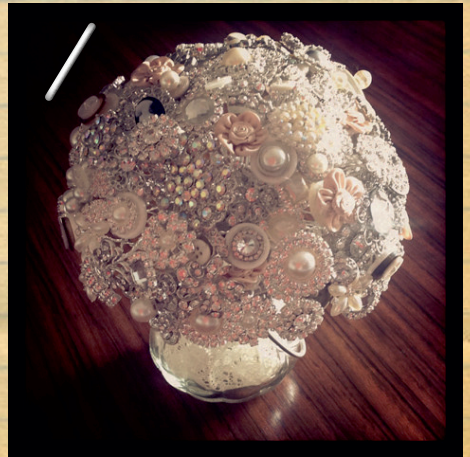
4. Once you have a lovely collection of 'stems' start to push the ends into the foam, curving the lower stems down slightly, add the stems randomly all

over and keep rotating the decoration to check it's balanced and even in shape.

5. Gradually fill in all the gaps (tiny buttons are great for 'filling in' as are the flowers.)

6. Stand back and admire! No two will ever be the same and that's the beauty of something handmade ♡

WOW!



DOUBLE WOW!